

IDENTIFICATION GUIDE TO THE BUTTERFLIES OF THE MALVERN HILLS

DINGY SKIPPER *Erynnis tages*

Upperside brown with pale markings. Underside similar with fewer markings.

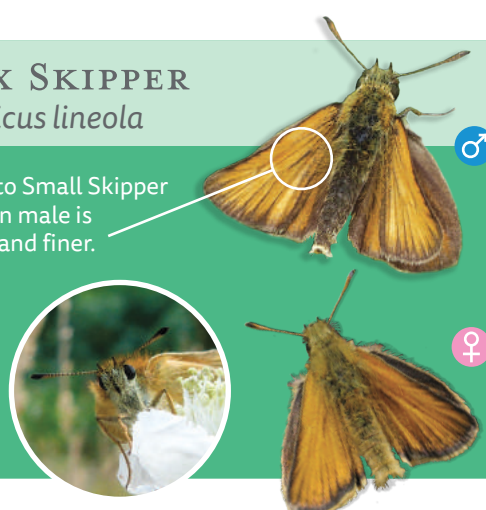
A small butterfly which is generally moth-like in appearance.



ESSEX SKIPPER *Thymelicus lineola*

Upperside similar to Small Skipper except sex brand on male is shorter, straighter and finer.

Underside tip of antennae glossy black giving the appearance that they have been dipped in ink.

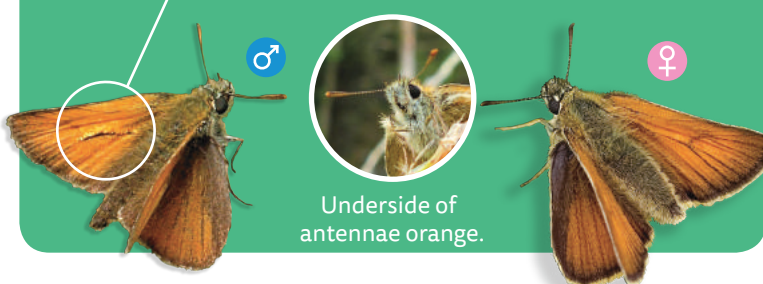


SMALL SKIPPER *Thymelicus sylvestris*

A small golden brown butterfly. The Male has a feint oblique black sex brand on each forewing.



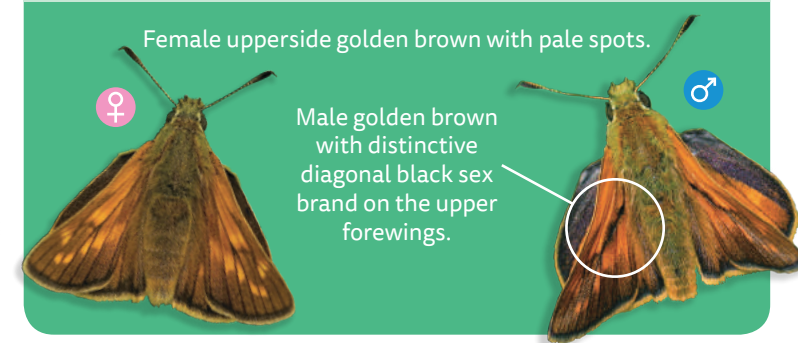
Underside of antennae orange.



LARGE SKIPPER *Ochlodes venata*

Female upperside golden brown with pale spots.

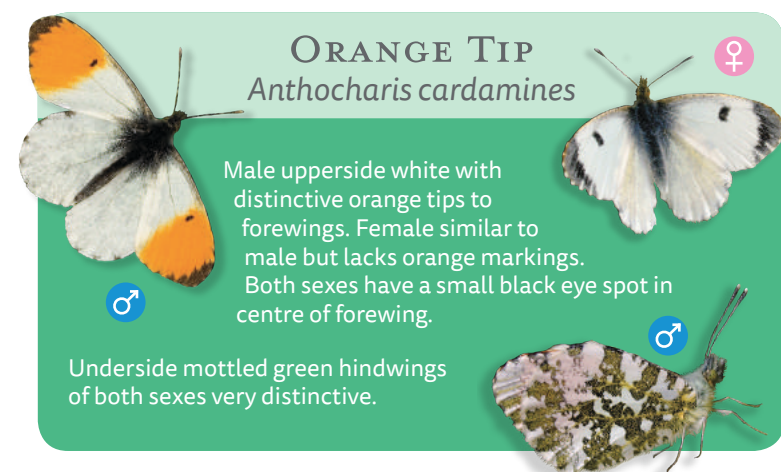
Male golden brown with distinctive diagonal black sex brand on the upper forewings.



ORANGE TIP *Anthocharis cardamines*

Male upperside white with distinctive orange tips to forewings. Female similar to male but lacks orange markings. Both sexes have a small black eye spot in centre of forewing.

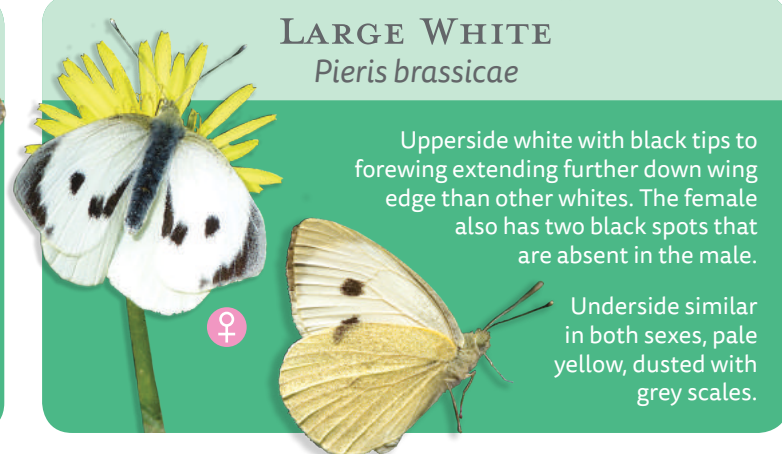
Underside mottled green hindwings of both sexes very distinctive.



LARGE WHITE *Pieris brassicae*

Upperside white with black tips to forewing extending further down wing edge than other whites. The female also has two black spots that are absent in the male.

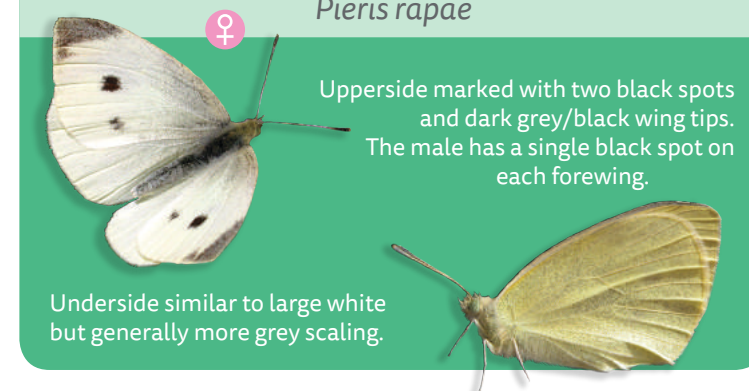
Underside similar in both sexes, pale yellow, dusted with grey scales.



SMALL WHITE *Pieris rapae*

Upperside marked with two black spots and dark grey/black wing tips. The male has a single black spot on each forewing.

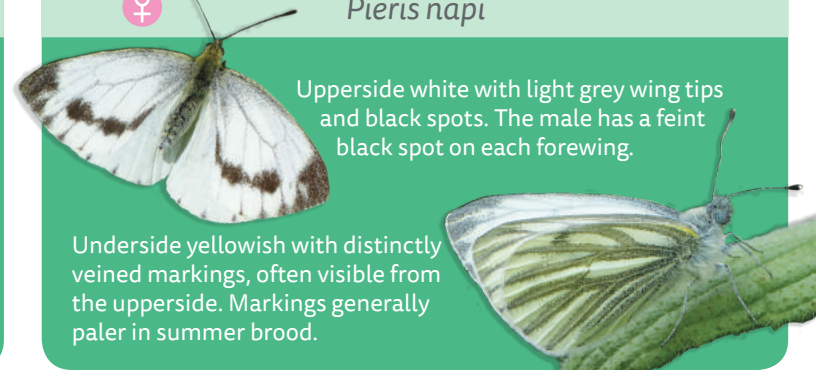
Underside similar to large white but generally more grey scaling.



GREEN-VEINED WHITE *Pieris napi*

Upperside white with light grey wing tips and black spots. The male has a feint black spot on each forewing.

Underside yellowish with distinctly veined markings, often visible from the upperside. Markings generally paler in summer brood.



CLOUDED YELLOW *Colias croceus*

Upperside yellow with black margins rarely seen except in flight as the Clouded Yellow always lands with its wings closed.

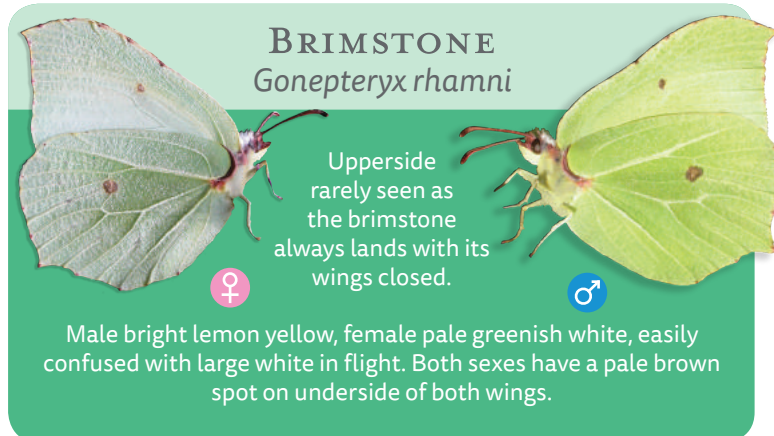
Underside deep yellowy orange, black spot on forewing with white spots fringed in red in centre of hindwing.



BRIMSTONE *Gonepteryx rhamni*

Upperside rarely seen as the brimstone always lands with its wings closed.

Male bright lemon yellow, female pale greenish white, easily confused with large white in flight. Both sexes have a pale brown spot on underside of both wings.



SPECKLED WOOD *Pararge aegeria*

Upperside mid/dark brown with series of yellow/cream blotches and black eyespots with white pupils, one on forewing and normally three on the hindwing.

Underside mottled grey and brown, usually forewing eye spot can be seen from underside.



SMALL HEATH *Coenonympha pamphilus*

The uppersides of the Small Heath are rarely seen as the butterfly always lands with its wings closed.

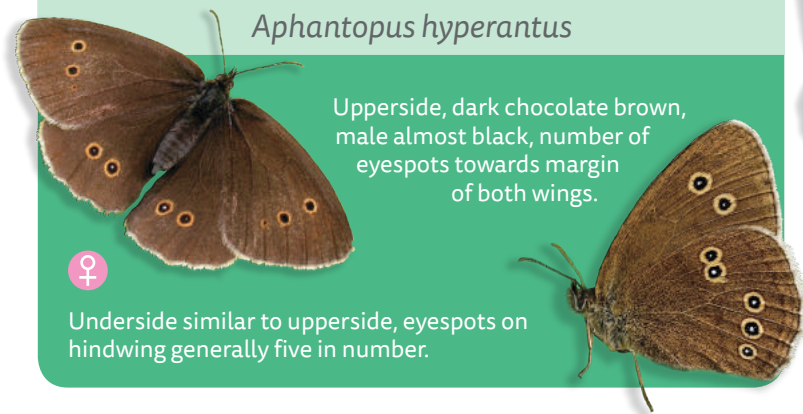
Underside orange on forewing. Hindwing has a pale brown furry appearance with paler rings/spots towards the outer edge.



RINGLET *Aphantopus hyperantus*

Upperside, dark chocolate brown, male almost black, number of eyespots towards margin of both wings.

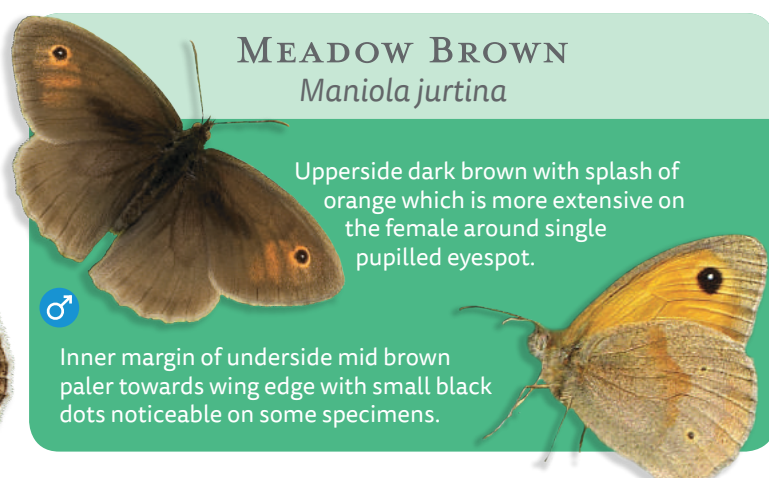
Underside similar to upperside, eyespots on hindwing generally five in number.



MEADOW BROWN *Maniola jurtina*

Upperside dark brown with splash of orange which is more extensive on the female around single pupilled eyespot.

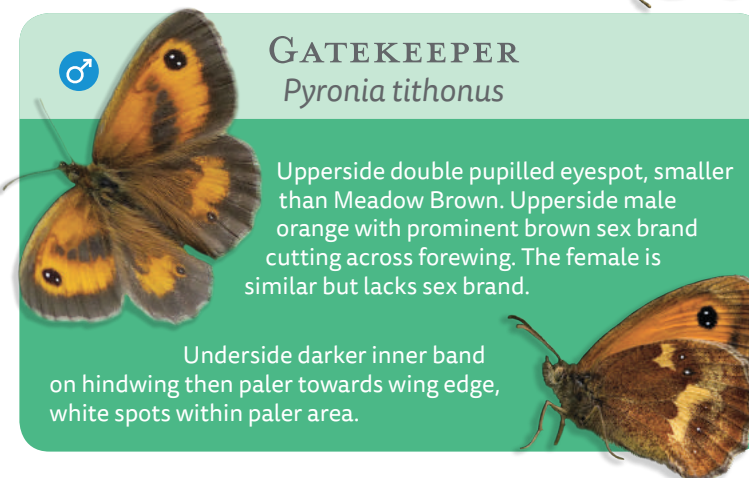
Inner margin of underside mid brown paler towards wing edge with small black dots noticeable on some specimens.



GATEKEEPER *Pyronia tithonus*

Upperside double pupilled eyespot, smaller than Meadow Brown. Upperside male orange with prominent brown sex brand cutting across forewing. The female is similar but lacks sex brand.

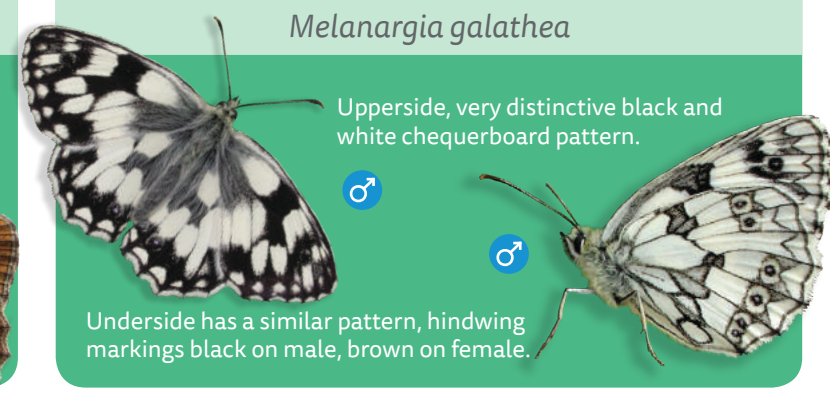
Underside darker inner band on hindwing then paler towards wing edge, white spots within paler area.



MARBLLED WHITE *Melanargia galathea*

Upperside, very distinctive black and white chequerboard pattern.

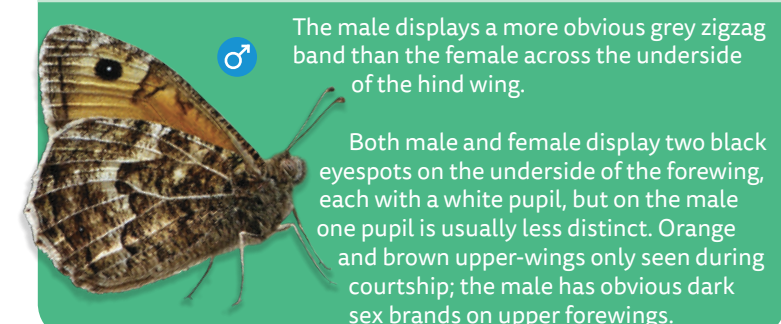
Underside has a similar pattern, hindwing markings black on male, brown on female.



GRAYLING *Hipparchia semele*

The male displays a more obvious grey zigzag band than the female across the underside of the hind wing.

Both male and female display two black eyespots on the underside of the forewing, each with a white pupil, but on the male one pupil is usually less distinct. Orange and brown upper-wings only seen during courtship; the male has obvious dark sex brands on upper forewings.



SMALL PEARL-BORDERED FRITILLARY *Boloria selene*

Distinctive marks on left forewing resemble the number 730.

Uppersides Orange/brown with dark brown/black spots and veins.

Underside large bold black spot in central hindwing cell.



SILVER-WASHED FRITILLARY *Argynnis paphia*

Male bright orange, black streaks on the forewing. Female, dusky, greenish-orange, black spots on forewing.

Underside, both sexes, greenish with silvery streaks.



DARK GREEN FRITILLARY *Argynnis aglaja*

Upperside golden orange with black spots. Line of chevrons along wing edges.

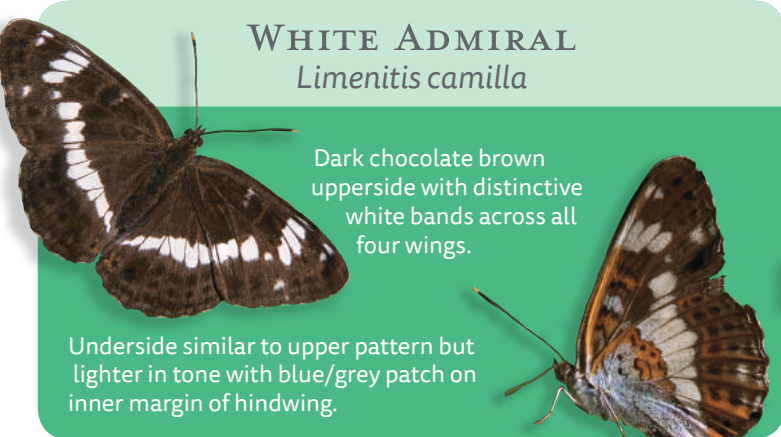
Underside hindwing greenish with creamy yellow margins and silver spots.



WHITE ADMIRAL *Limenitis camilla*

Dark chocolate brown upperside with distinctive white bands across all four wings.

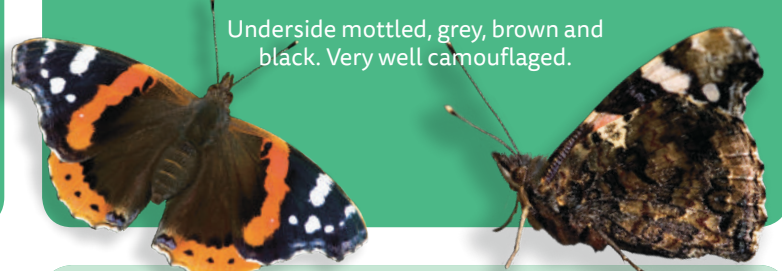
Underside similar to upper pattern but lighter in tone with blue/grey patch on inner margin of hindwing.



RED ADMIRAL *Vanessa atalanta*

Upperside velvet black with red diagonal stripe, white spots near wing tips and red border to hindwings.

Underside mottled, grey, brown and black. Very well camouflaged.



PAINTED LADY *Vanessa cardui*

Upperside spotted with shades of pinkish orange and brown with black tips and white spots to forewings.



PEACOCK *Inachis io*

Upperside mainly maroon with unmistakable large peacock eye spots on all four wings.

Underside dark brown/black.



SMALL TORTOISESHELL *Aglais urticae*

Upperside orange with black spots and a margin of blue crescents on a black band along outside edges of all four wings.

Underside wide black inner band, narrower and paler outer band with dark margin.



COMMA *Polytonia c-album*

Upperside orange with black markings.

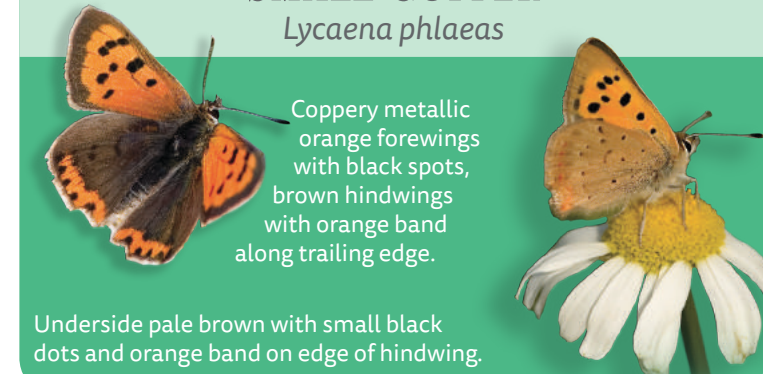
Distinctive scalloped edge to wings and white 'comma' mark on underside.



SMALL COPPER *Lycaena phlaeas*

Coppery metallic orange forewings with black spots, brown hindwings with orange band along trailing edge.

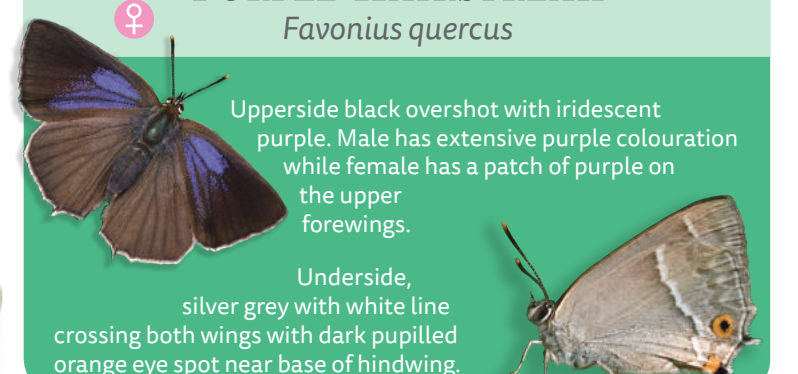
Underside pale brown with small black dots and orange band on edge of hindwing.



PURPLE HAIRSTREAK *Favonius quercus*

Upperside black overshot with iridescent purple. Male has extensive purple colouration while female has a patch of purple on the upper forewings.

Underside, silver grey with white line crossing both wings with dark pupilled orange eye spot near base of hindwing.



GREEN HAIRSTREAK *Callophrys rubi*

Upperside of wings uniform brown but rarely seen as the green hairstreak always lands with its wings closed.

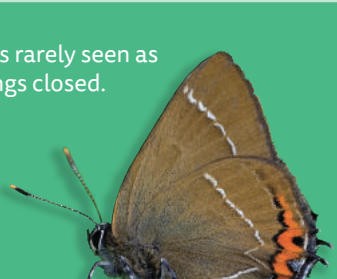
Underside bright metallic green sometimes with a line of white spots crossing the hindwing.



WHITE-LETTER HAIRSTREAK *Satyrus w-album*

Uniform brown upperside of wings rarely seen as butterfly always lands with its wings closed.

Distinctive underside brown with white line crossing both wings. Broken line on hind wing W-shaped. Orange margin with silvery blue spot towards the tail of the hindwing.



HOLLY BLUE *Celastrina argiolus*

Upperside male is pale blue with narrow black margin. Female has broader, distinctive black margins on upper forewings.

Underside silvery pale blue with tiny black spots.



BROWN ARGUS *Aricia agestis*

Upperside uniform brown with orange lunules along the outer edge of all four wings.

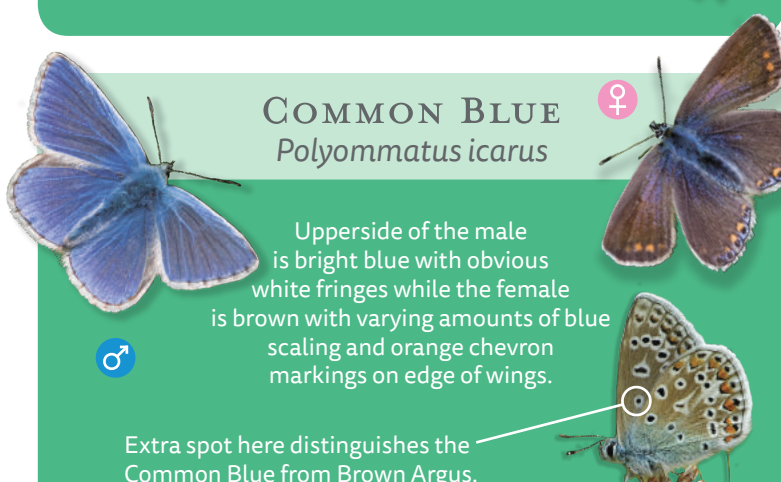
Underside similar to Common Blue but the arrangements of spots near leading edge of hindwing resemble a colon punctuation mark.



COMMON BLUE *Polyommatus icarus*

Upperside of the male is bright blue with obvious white fringes while the female is brown with varying amounts of blue scaling and orange chevron markings on edge of wings.

Extra spot here distinguishes the Common Blue from Brown Argus.



DRAB LOOPER MOTH *Minoa murinata*

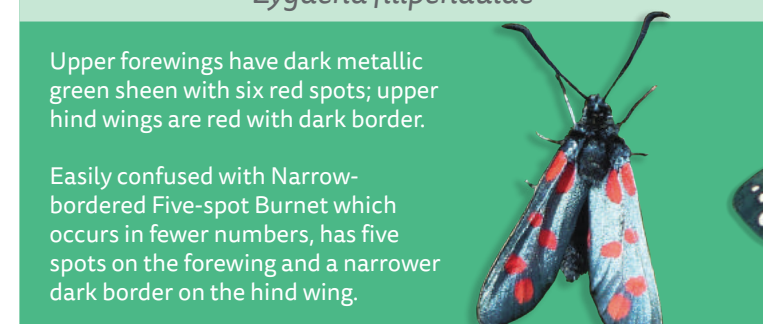
Rare small velvet brown moth seen on Wood Spurge



SIX-SPOT BURNET MOTH *Zygaena filipendulae*

Upper forewings have dark metallic green sheen with six red spots; upper hind wings are red with dark border.

Easily confused with Narrow-bordered Five-spot Burnet which occurs in fewer numbers, has five spots on the forewing and a narrower dark border on the hind wing.



SCARLET TIGER MOTH *Callimorpha dominula*

Upper forewings have a dark metallic-green sheen with cream spots, upper hindwings are red with black patches

